

Potsdamer Straße 100
10785 Berlin, Germany
contact@kehrergalerie.com
www.kehrergalerie.com

Wed – Sat | 12 – 19 Uhr
and by appointment

Berlin 2050 Raum und Wert

Opening
Friday, November 23, 7 – 9 pm

Exhibition
November 24, 2018 – January 5, 2019

Kehrer Galerie is delighted to open the exhibition
»Berlin 2050 – Raum und Wert« on Friday, November
23, 2018 from 7 to 9 pm.

Panel:
On December 17, 7 pm, there will be a Panel that will be
moderated by the professors Barbara Hoidn und Bernd
Albers.

Kehrer Galerie interferes. For the first time the gallery is hosting an exhibition on concrete political issues regarding urban development offering a platform for discussion.



Der Berliner Stadtkern
Student: Giulio Pescetti
Potsdam School of Architecture:
Prof. Bernd Albers – Prof. Dr. Silvia Malcovati



Köpenicker Landstrasse
Student: Kai James
The University of Texas at Austin:
Prof. Barbara Hoidn

The thesis of the renowned professors and their students focuses on the macro-scale of metropolitan Berlin that is endangered to get dissolved by a multitude of micro-scale discussions. Berlin is growing and changing in its dimensions, in its shape and in its character. These changes should not simply be left to the forces of the market; they need guiding ideas and strategies. Following the first exhibition on »Berlin 2050. Concrete Density« in 2017, this year The University of Texas at Austin and the Potsdam School of Architecture are presenting their students' projects on the theme of »Space and Value.«

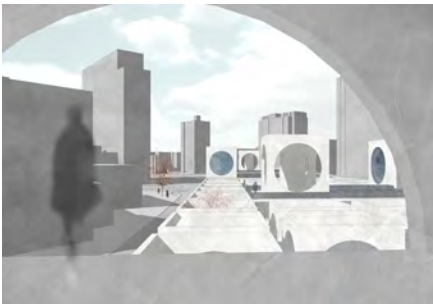
KEHRER GALERIE

The value of urban space is not solely based on economics, but rather in its material and cultural qualities, its history and tradition, its potential as a source of identification, its openness towards cultural and social integration.

It is the aim of the exhibition to discuss these values and to redefine them, to activate them with regard to the urban discourse and to allow them to be experienced by means of the urban designs. The projects raise the issues of Berlin's underlying structure with its central core and radiating arteries that became the city's developmental axes in the 19th and 20th centuries, and which carried space and value in equal measure to the periphery.

Using quantitative and qualitative data, analytical plans and working hypotheses, urban design and architectural scenarios are being presented for Berlin's historic centre – the Marx- Engels-Forum, the surroundings of the palace, the Mühlendamm bridge, the Fischerinsel, Molkenmarkt and Spittelmarkt – and for exemplary sites of the reunified city – the Urania – as well as for the arteries such as the Avus, the Köpenicker Landstraße, Adlergestell, Treskowallee, and Alt-Friedrichsfelde.

These projects are dealing with a broad spectrum of urban spaces in the expanding city of Berlin and they are taking on the challenge to transform these sites into places in which the value of urban life can be developed and expressed in a productive way.



An der Urania

Student: Anna Sachs
Potsdam School of Architecture:
Prof. Jan Kleihues



Schwarzplan Berlin 2050

© M. Grimaldi and Hoidn Wang
Partner



Die Magistralen

Studenten: Anju Palta, Kuan Ying (Kaia) Chiu
The University of Texas at Austin:
Prof. Wilfried Wang

Contact for further information and press images:
Pauline Friesecke: pauline.friesecke@kehrergalerie.com
T +49 (0)30 688 16 949